



# ACCESS POINT

## NEWSLETTER

January-February 2025



### FREE TAX PREPARATION WITH AARP TAX AIDE



Each year, the Township partners with the AARP Foundation to provide FREE income tax assistance. AARP Tax-Aide helps low- to moderate-income taxpayers file their state and federal returns at no cost. Appointments will be available from early February- mid April and will be scheduled on a first-come, first-served, first-available basis for taxpayers who have all their documents ready.

Our Tax-Aide Appointment Call Line (847-285-4597) will be open Monday-Friday from 9-4pm beginning January 22. Due to the large interest in this popular program, all appointments must be made through this appointment line. Walk-ins will be redirected to call the appointment line, and no wait list will be created. *Pro tip:* call volume significantly decreases by day 3 and afternoons generally have a shorter wait time. Appointments are released in 2-3-week batches, so the call line will periodically close when the current batch of appointments is filled. Residents who miss their appointment without cancelling at least 24 hours prior will be unable to schedule another appointment without approval from the Site Coordinator.

For up-to-date information on appointment availability and required documents, visit [schaumburgtownship.org](http://schaumburgtownship.org) to subscribe to the Senior eNewsletter.

#### INSIDE THIS ISSUE:

Recreation & Education.....	2-6	Township Services .....	12-13
Calendar .....	7-10	Social Services .....	14
Nurse Services .....	11	Disability Services News.....	15

## RECREATION AND EDUCATION

Register online, in-person or by calling 847-285-4541. Payment due at registration: cash, check, credit card.  
Check-in begins at listed time.



### SAVANNAH BUS TOUR



Sunday, May 18-Saturday, May 24 | \$940 double occupancy, \$1,260.00 for single occupancy\*

Registration Window: Now-March 1

*Savannah, Georgia*

We are traveling with Diamond Tours to Savannah Georgia for a 7 day/6 night tour. During the trip we will see the famous Savannah Victorian homes, tour the historic district and island hop to Jekyll and St. Simons. We will also enjoy a show at the historic Savannah Theatre and spend some time at the Parris Island marine base. A daily itinerary is available in Disability and Senior Services.

\*The cost includes transportation, 6 nights of lodging, most breakfasts and dinners, tours, gratuity and taxes. Price is per person for double occupancy. A \$75 deposit is due at registration and final payment is due March 11. Payment can be split into 3 payments of \$288 for double or \$395 for single occupancy with installments due January 1, February 1 and March 1.

### FEED MY STARVING CHILDREN



Wednesday, January 29 | 8:30am | \$5

Registration Window: January 2-January 28

*Schaumburg, Illinois*



Join us as we give back and volunteer at Feed My Starving Children. We will be packing rice, soy, dried vegetables and a blend of vitamins and minerals. After a little hard work, we will head to Egg Harbor Cafe for lunch. Lunch is on your own.

## RECREATION AND EDUCATION

Register online, in-person or by calling 847-285-4541. Payment due at registration: cash, check, credit card.  
Check-in begins at listed time.

## PROGRAMS RETURNING TO THE TOWNSHIP JANUARY 6

At long last, we are ready to welcome programs back to the Township. We appreciate your patience and hope you enjoy the new space. Now is a great time to try a class you've not taken before! All below programs are returning to the Township the week of January 6 and are \$5 per class/Class Pass eligible. In general, the classes are listed most intense to least intense: Fit for Life, Zumba Gold, Gentle Yoga, Chairbics, Chair Yoga and Meditation.

**FIT FOR LIFE**

*Mondays | 9:30am and Fridays | 8:15am*

This cardio conditioning class is for all fitness levels. Participants work on cardio, strength and balance.

**ZUMBA GOLD**

*Tuesdays | 9:30am*

Exercise through dance! Come ready to sweat and prepare to leave feeling empowered and strong.

**GENTLE YOGA**

*Fridays | 9:30am*

This class will help improve your flexibility, circulation and give you higher energy levels. Bring a yoga mat.

**CHAIROBICS**

*Wednesdays | 1pm*

This sit-down class includes low-impact aerobics, yoga stretches and movements utilizing your whole body.

**CHAIR YOGA**

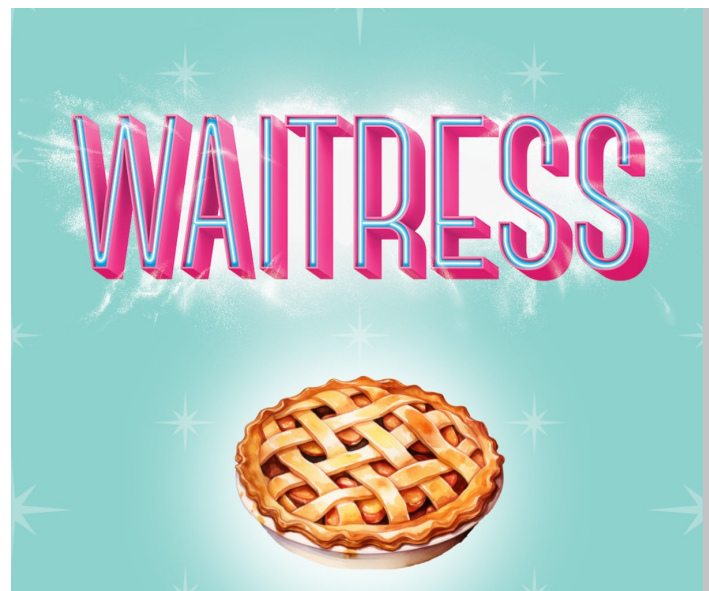
*Mondays and Fridays | 1pm*

This class offers gentle stretching to increase your flexibility and strength. No experience necessary.

**MEDITATION**

*1st & 3rd Friday | 10:30am*

Learn mindfulness to calm and steady your mind through guided meditation.



## WAITRESS



Wednesday, February 19 | 10:30am | \$75

Registration Window: January 2-January 28

*Paramount Theatre*

What is more American than apple pie? A small town waitress with a dream and the ingredients for success! Stuck in a loveless marriage, Jenna becomes pregnant, and then finds acceptance in the most unexpected place. Hoping to bake her way out of her troubles, she puts her heart and soul into her unique pies. Ticket includes show, lunch and transportation.

## RECREATION AND EDUCATION

Register online, in-person or by calling 847-285-4541. Payment due at registration: cash, check, credit card.  
Check-in begins at listed time.



### IN-PERSON BINGO IS BACK JANUARY 9



Thursdays | Doors Open: 12pm | Play Begins: 1pm  
\$1 per card or \$5 for 6 cards (8 cards max.)

Mark your calendars and get ready because in-person bingo returns to the Township on Thursday, January 9! We know it's been a while since we've played in person, so here is a refresher of the rules :

- Doors open at 12pm. Check-in is required before purchasing cards and claiming your seat.
- Cards can be purchased with cash only. A maximum of 8 cards per player. No bills larger than \$10 will be accepted.
- If you want to sit with specific friends, we suggest arriving at the same time to ensure you find seats together. Saving seats and/or tables is not allowed.
- 15 games will be played. Money collected for cards will be split into cash prizes for each game.
- There will also be a 50/50 raffle with proceeds going to the Schaumburg Township Foundation to support Seniors in need.

### TITANIC, THE MUSICAL



Wednesday, April 16 | 10am | \$96  
Registration Window: February 1-  
March 16  
*Marriott Lincolnshire*

This musical captures the triumph and tragedy of the hopeful passengers on the ill-fated Ship of Dreams. Based on the real people aboard the most legendary ship in the world, Titanic, the Musical is a stirring portrait of the passengers on board the "unsinkable ship" and the tragedy that followed. The original Broadway production won five Tony Awards including Best Musical, Best Score and Best Book. Price includes choice of lunch, chicken or salmon, admission and transportation.

## RECREATION AND EDUCATION

Register online, in-person or by calling 847-285-4541. Payment due at registration: cash, check, credit card.  
Check-in begins at listed time.

### I AND YOU



Wednesday, March 19 | 10am | \$45  
Registration Window: January 15-February 20  
*Citadel Theatre Company*

This extraordinary story is charming, mysterious, and poetic in the truest sense of the word. Lauren Gunderson's *I and You* is a study of the beauty, the agony and the mystery of the human connection. Price includes admission and transportation. Lunch is on your own at Chief's prior to show.

### ELLA FITZGERALD



Tuesday, February 25 | 11:45am | \$48  
Registration Window: January 1-February 20  
*Metropolis Performing Arts Centre*

Award-winner Alexis J. Roston salutes America's favorite jazz singer Ella Fitzgerald. Roston is known for her mesmerizing star turn as Billie Holiday in multiple productions of *Lady Day at Emerson's Bar and Grill*, earning Chicago's Jeff Award and Black Theatre Alliance Award. In a spellbinding concert performance, Roston effortlessly emits the sultry swing and playful joy that made Fitzgerald an American treasure. Classic tunes include "Summertime," "The Lady Is a Tramp" and "It Don't Mean a Thing If It Ain't Got That Swing." Lunch is on your own at Armand's Pizzeria. Price includes admission and transportation.



### EVENT ICON LEGEND



On-site  
(1 Illinois Blvd,  
Hoffman)



Off-site  
(Less than  
20 miles)



Off-site  
(Over 20  
miles)



None



Wheelchair  
& Walker  
Accessible



Light



Medium



Strenuous



FREE



\$

\$0.01-  
\$20.00



\$\$

\$20.01-  
\$50.00



\$\$\$

\$50.00+



Donation



Registration  
Required



No Registration  
Required

## RECREATION AND EDUCATION

Register online, in-person or by calling 847-285-4541. Payment due at registration: cash, check, credit card.  
Check-in begins at listed time.

### BREAKFAST SOCIAL



Did you know that socializing can lighten your mood and make you feel happier? Join us for breakfast! You may meet new friends and/or visit with old ones. Experience some great food while supporting local township restaurants. Individual checks are provided.

#### CHECKERS

Tuesday, January 21 | 8am  
Registration Deadline: January 14  
506 Wise Rd., Schaumburg

#### SWEET ORANGE

Tuesday, February 18 | 8am  
Registration Deadline: February 11  
933 S. Roselle Rd., Schaumburg



## RECURRING PROGRAMS

MONDAY	TUESDAY	WEDNESDAY	THURSDAY	FRIDAY
Fit for Life 9:30am   \$5	Walking Group* 8:45am   FREE	Walking Group* 8:45am   FREE	Walking Group* 8:45am   FREE	Fit for Life 8:15am   \$5
Caregiver Support Group 11am   2nd Mon.	Zumba Gold 9:30am   \$5	All About Health* 10am   1st Wed.	AM Zoom Bingo 10am   FREE	Knit & Crochet 9am   FREE
Chair Yoga 1pm   \$5	Diamond Painting 10am   \$5 + Kit 2nd & 4th Tues.	Diabetes Support Group* 10:30am 2nd & 4th Wed.	In-person Bingo 1pm   \$1 per card or \$5 for 6 cards	Gentle Yoga 9:30am   \$5
Art Connections 2pm   FREE	Tai Chi 1pm   \$5	Chairobics 1pm   \$5		Meditation 10:30am   \$5 1st & 3rd Fri.
	Book Club 2:30pm   FREE 3rd Tues.	Bridges to Memory* 2pm   3rd Wed.		Chair Yoga 1pm   \$5

\*Please call Nurse Janet at 847-285-4551 with questions or to register.

# JANUARY 2025

MONDAY

TUESDAY

WEDNESDAY

THURSDAY

FRIDAY

Zoom Info:  
Meeting ID:  
471 587 2835  
  
Please call  
847-285-4541 for the  
passcode.

**Township Offices  
Closed**

No Programming

No Programming

**9:30am** Fit for Life  
**1pm** Chair Yoga  
**2pm** Art Connections

**8:45am** Walking  
**9:30am** Zumba Gold  
**1pm** Tai Chi

**8:45am** Walking  
**10am** All About  
Health: Managing  
Anxiety & Stress  
**1pm** Chairbics

**8:45am** Walking  
**10am** AM Zoom Bingo  
**1pm** In-Person Bingo

**8:15am** Fit for Life  
**9am** Knit & Crochet  
**9:30am** Gentle Yoga  
**1pm** Chair Yoga

**9:30am** Fit for Life  
**11am** Caregiver  
Support Group  
**1pm** Chair Yoga  
**2pm** Art Connections

**8:45am** Walking  
**9:30am** Zumba Gold  
**10am** Diamond  
Painting  
**1pm** Tai Chi

**8:45am** Walking  
**10:30am** Diabetes  
Support Group  
**1pm** Chairbics

**8:45am** Walking  
**10am** AM Zoom Bingo  
**1pm** In-Person Bingo

**8:15am** Fit for Life  
**9am** Knit & Crochet  
**9:30am** Gentle Yoga  
**10:30am** Meditation  
**1pm** Chair Yoga

# JANUARY 2025

MONDAY	TUESDAY	WEDNESDAY	THURSDAY	FRIDAY
<p><b>20</b></p> <p>Township Offices Closed</p>	<p><b>21</b></p> <p>8am Breakfast Social: Checkers</p> <p>8:45am Walking</p> <p>9:30am Zumba Gold</p> <p>11am Medicare Basics</p> <p>1pm Tai Chi</p> <p>2:30pm Book Club</p> <p>3-4pm DSS Closed</p>	<p><b>22</b></p> <p>8:45am Walking</p> <p>10am Coffee Chat</p> <p>1pm Chairobics</p> <p>2pm Bridges to Memory</p>	<p><b>23</b></p> <p>8:45am Walking</p> <p>10am AM Zoom Bingo</p> <p>1pm In-Person Bingo</p>	<p><b>24</b></p> <p>8:15am Fit for Life</p> <p>9am Knit &amp; Crochet</p> <p>9:30am Gentle Yoga</p> <p>1pm Chair Yoga</p>
<p><b>27</b></p> <p>9:30am Fit for Life</p> <p>1pm Chair Yoga</p> <p>2pm Art Connections</p>	<p><b>28</b></p> <p>9:30am Zumba Gold</p> <p>10am Diamond Painting</p> <p>1pm Tai Chi</p> <p>3-4pm DSS Closed</p>	<p><b>29</b></p> <p>8:30am Feed My Starving Children</p> <p>8:45am Walking</p> <p>10:30am Diabetes Support Group</p> <p>1pm Chairobics</p>	<p><b>30</b></p> <p>8:45am Walking</p> <p>10am AM Zoom Bingo</p> <p>1pm In-Person Bingo</p>	<p><b>31</b></p> <p>8:15am Fit for Life</p> <p>9am Knit &amp; Crochet</p> <p>9:30am Gentle Yoga</p> <p>1pm Chair Yoga</p>

## MEDICARE BASICS



Tuesday, January 21 | 11am | FREE  
Township of Schaumburg



Join us as we highlight the parts of Medicare:

- A (Hospital)    -C (Advantage Plan)
- B (Medical)    -D (Drug Coverage)

Learn the basics on how Medicare works, the

costs associated with Medicare, the difference between Medicare and Medicaid and information you need to know to make informed decisions about your healthcare.



# FEBRUARY 2025

MONDAY

TUESDAY

WEDNESDAY

THURSDAY

FRIDAY

**3**

**9:30am** Fit for Life  
**1pm** Chair Yoga  
**2pm** Art Connections

**4**

**8:45am** Walking  
**9:30am** Zumba Gold  
**1pm** Tai Chi  
**3-4pm** DSS Closed

**5**

**8:45am** Walking  
**10am** All About Health: Dementia & Alzheimer's Disease  
**1pm** Chairobics

**6**

**8:45am** Walking  
**10am** AM Zoom Bingo  
**1pm** In-Person Bingo

**7**

**8:15am** Fit for Life  
**9am** Knit & Crochet  
**9:30am** Gentle Yoga  
**10:30am** Meditation  
**1pm** Chair Yoga

**10**

**9:30am** Fit for Life  
**11am** Caregiver Support Group  
**1pm** Chair Yoga  
**2pm** Art Connections

**11**

**8:45am** Walking  
**9:30am** Zumba Gold  
**10am** Diamond Painting  
**1pm** Tai Chi  
**3-4pm** DSS Closed

**12**

**8:45am** Walking  
**10:30am** Diabetes Support Group  
**1pm** Chairobics

**13**

**8:45am** Walking  
**10am** AM Zoom Bingo  
**11am** Medicare Advantage Plans vs. Original Medicare  
**1pm** In-Person Bingo

**14**

**8:15am** Fit for Life  
**9am** Knit & Crochet  
**9:30am** Gentle Yoga

**17**

**Township Offices Closed**

**18**

**8am** Breakfast Social: Sweet Orange  
**8:45am** Walking  
**9:30am** Zumba Gold  
**1pm** Tai Chi  
**3-4pm** DSS Closed

**19**

**8:45am** Walking  
**10am** Coffee Chat  
**10:30am** Waitress  
**1pm** Chairobics  
**2pm** Bridges to Memory

**20**

**8:45am** Walking  
**10am** AM Zoom Bingo  
**1pm** In-Person Bingo

**21**

**8:15am** Fit for Life  
**9am** Knit & Crochet  
**9:30am** Gentle Yoga  
**10:30am** Meditation  
**1pm** Chair Yoga

# FEBRUARY 2025

MONDAY	TUESDAY	WEDNESDAY	THURSDAY	FRIDAY
<b>24</b>	<b>25</b>	<b>26</b>	<b>27</b>	<b>28</b>
<p><b>9:30am</b> Fit for Life</p> <p><b>1pm</b> Chair Yoga</p> <p><b>2pm</b> Art Connections</p>	<p><b>8:45am</b> Walking</p> <p><b>9:30am</b> Zumba Gold</p> <p><b>10am</b> Diamond Painting</p> <p><b>11:45am</b> Ella Fitzgerald</p> <p><b>1pm</b> Tai Chi</p> <p><b>3-4pm</b> DSS Closed</p>	<p><b>8:45am</b> Walking</p> <p><b>10:30am</b> Diabetes Support Group</p> <p><b>1pm</b> Chairobics</p>	<p><b>8:45am</b> Walking</p> <p><b>10am</b> AM Zoom Bingo</p> <p><b>1pm</b> In-Person Bingo</p>	<p><b>8:15am</b> Fit for Life</p> <p><b>9am</b> Knit &amp; Crochet</p> <p><b>9:30am</b> Gentle Yoga</p> <p><b>1pm</b> Chair Yoga</p>
				<p>Zoom Info: Meeting ID: 471 587 2835</p> <p>Please call 847-285-4541 for the passcode.</p>

## ORIGINAL MEDICARE VS. MEDICARE ADVANTAGE



Thursday, February 13 | 11am | FREE  
Township of Schaumburg



Choosing how you want to get your Medicare coverage can be difficult. Do you stay with Original Medicare or enroll in a Medicare Advantage plan? In this presentation, you'll learn the differences between the two coverage options. We will also discuss Medicare assistance programs.

## NURSE SERVICES

ANXIETY

## ALL ABOUT HEALTH

1st Wednesday | 10am | FREE  
Township of Schaumburg

Join Nurse Janet to learn about pressing health topics each month. No registration required.

January 8\*: Anxiety/Stress and How to Manage It  
February 5: Dementia/Alzheimer's Disease

\*Second Wednesday of the month.

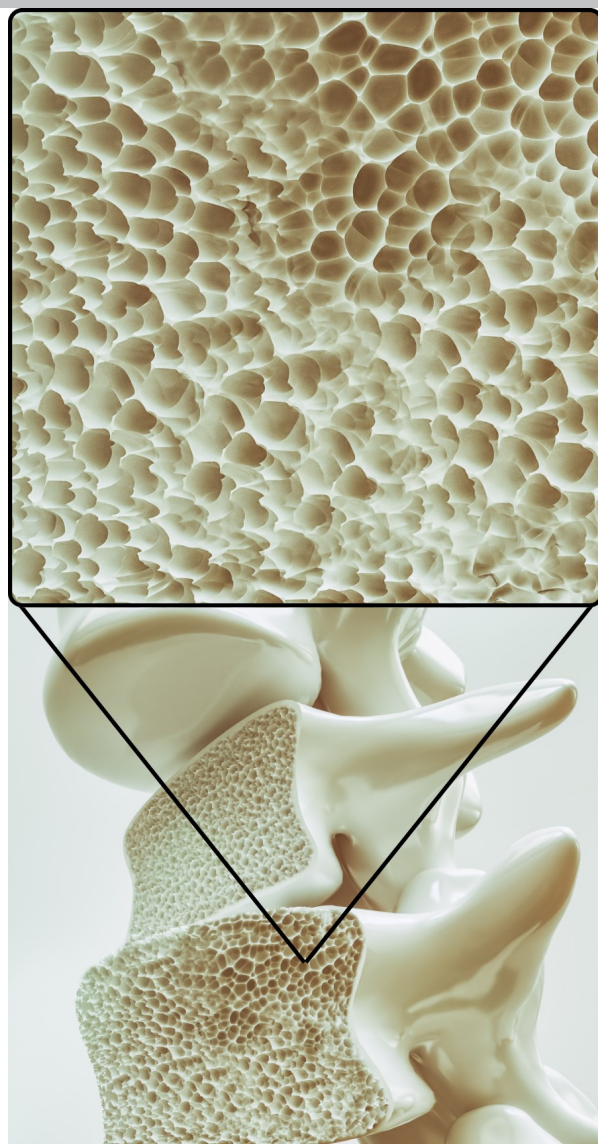
## BONE DENSITY SCREENING

Every Tuesday, Wednesday & Thursday  
By appointment | FREE  
Township of Schaumburg

Our bones lose density over time, making them weaker and prone to breakage. As we age, density loss can cause osteopenia, below normal bone mineral density, or osteoporosis, a disease causing brittle bones. While post-menopausal white and Asian women are at the highest risk, osteoporosis can happen to people of all races and genders. Hormones, diet, medicine, medical history and more can be causes of bone density loss as well.

Bone density screenings can arm you with the information needed to make health changes to slow bone loss. Free bone density screenings at the Township are for those who have never been screened before and can be used as a prescreen for osteopenia or osteoporosis. Clients will receive their results, which can be shared with their primary care physician if needed. Call 847-285-4551 to schedule an appointment today.

Source: [tinyurl.com/3jx3v6mm](https://tinyurl.com/3jx3v6mm); [tinyurl.com/bdfuc8h8](https://tinyurl.com/bdfuc8h8)



## TOWNSHIP SERVICES

### TRIP

Township riders can use the Township Riders Initiative Program (TRIP) to go outside of Schaumburg Township get to nearby townships and hospitals for medical purposes. Riders can go within Elk Grove, Hanover, Palatine, Schaumburg and Wheeling townships as well as Stroger Cook County Hospital, Hines Veterans Hospital, Northwestern Hospital, Lovell Federal Healthcare and UIC Medical Monday - Friday 5am-9pm and Saturday 7-4pm. Trips to Advocate Good Shepard are also available on Tuesday, Thursday and Friday only. Rides cost \$5 per township line crossed during a single trip with a maximum of \$10 per one-way. TRIP is offered in cooperation with PACE, Schaumburg Township has joined Elk Grove, Hanover, Palatine and Wheeling Townships.



### NEW CHECK-IN PROCESS JANUARY 1

Starting January 1, Township visitors will be asked to sign-in at the security desk using Greetly. You'll get a nametag and be asked to wait in the lobby until staff are ready to see you. This new process will help manage the flow of clients as well as keep the building safe. One exception to this process is residents coming to pre-registered events, such as bingo, will not need to sign-in. Questions? Reach out to Director Cordes at 847-285-4541.

### TRANSPORTATION GROCERY SCHEDULE

Transportation Direct Line: 847-882-1929



### COMMUNITY FEEDBACK NEEDED

The Township wants to hear from you! Join us in upcoming Project Unify focus group sessions. Sessions will last 30-60 minutes, and accommodations are available upon request. Sign up with this QR code or at [tinyurl.com/88y2vjzf](https://tinyurl.com/88y2vjzf).

Stores	Day(s)	Area Served
Walmart or Target	Monday or Friday	Whole Township
Jewel, Mariano's & Aldi	Tuesday, Wednesday & Thursday	Based on resident's location in the Township
Valli	Tuesday	Whole Township
Tony's	Friday	Whole Township

## TOWNSHIP SERVICES

### FOOD ASSISTANCE

Food assistance comes in many forms. Some need a bit of help at the store to make their paychecks stretch a bit further, some need an extra bag of food each month and some need more.

Food pantry appointments are easy to make by calling 847-285-4503. We ask that residents bring a current piece of mail that has been issued within the last 30 days as proof of residency, to each appointment. We operate a client-choice food pantry model that allows residents to select their own food. Due to the nature of our donation-based program, items vary daily/weekly. Food pantry hours are:

- Monday: 10-3pm
- Tuesday: 9-2pm
- Wednesday: 9- 2pm
- Thursday: 11-5pm
- Friday: 10-3pm

Supplemental Nutrition Assistance Program (SNAP) is also available for those who qualify. SNAP, formerly known as food stamps, supplements your grocery budget so you can get the food you need at the grocery store. Township staff can help determine if you qualify and help you apply. Call Disability and Senior Services at 847-285-4541 to make an appointment.



### MOBILE DENTAL CLINIC

Endeavor Health's Mobile Dental Clinic provides dental care for residents of the Township who do not have access to dental care due to financial barriers. To be eligible for services, patients must meet the following requirements:

- Be a Township of Schaumburg resident
- Have a household income at or below 200% of the federal poverty level or be a General Assistance or Medicaid recipient
- Have NO private dental insurance

Residents must be screened by a Township caseworker before scheduling an appointment with the Mobile Dental Clinic. Please call 847-285-4503 to schedule a screening appointment.



## SOCIAL SERVICES

### LOW INCOME HOME ENERGY ASSISTANCE PROGRAM (LIHEAP)

The LIHEAP program helps eligible low-income households with their gas and electric bills. The program year usually begins in the Fall. To qualify for LIHEAP, the household's 30-day gross income must be at or below 200% of the Federal Poverty Level:

\$2,510	1-person household
\$3,407	2-person household
\$4,303	3-person household
\$5,200	4-person household
\$6,097	5-person household

The following documents are required to apply for LIHEAP:

- Social Security cards for everyone in the household
- Proof of 30-day gross income for everyone in the household
- Most recent gas and electric bills
- Current Lease (if you rent)

For more information, or to schedule an appointment, please contact Disability & Senior Services at 847-285-4541.



### MEDICARE ADVANTAGE ANNUAL ENROLLMENT PERIOD

From January 1 to March 31 each year, Medicare Advantage plan recipients can change Medicare Advantage plans or switch to traditional Medicare with a standalone prescription drug plan. If you are currently on a Medicare Advantage plan and would like to make a change, please call Disability & Senior Services at 847-285-4541 to schedule an appointment. You will need to provide your Medicare card, a list of your prescriptions with the dosage and frequency, and a list of your doctors.

## DISABILITY SERVICES NEWS



### DEAF SERVICES IS HIRING

Deaf Services is excited to announce it is hiring a Part Time Program Specialist. This person will plan and facilitate programs and events for the Deaf and Hard of Hearing community, coordinate the monthly Deaf Support Group and work under the Deaf Services Coordinator. Fluency in American Sign Language and Deaf Culture is required. Must demonstrate patience with Deaf people, including senior citizens, be able to work independently or with a team, be proficient in Microsoft Office Suite and possess a valid driver's license. Deaf or Hard of Hearing persons encouraged to apply. For the full job description visit: [tinyurl.com/4jmsrbsk](https://tinyurl.com/4jmsrbsk). Please submit a cover letter, proof of references and updated resume by email directly to [hr@schtwn.org](mailto:hr@schtwn.org) (Subject line: Last Name - Deaf Services Program Specialist - TOS) to apply.

### ADAPTIVE CLOTHING BECOMING MORE ACCESSIBLE

Did you know retailers like Lane Bryant, Target, Kohls, Nike and Tommy Hilfiger offer adaptive clothing in a growing trend of offering more inclusive clothing. Adaptive clothing utilizes different fabrics, Velcro or magnetic closures to make dressing easier. Check out this GBH article that includes links to several designers and more information: [tinyurl.com/5n7rfnwa](https://tinyurl.com/5n7rfnwa).



### DISABILITY & SENIOR SERVICES MONTHLY COFFEE CHAT



3rd Wednesdays\* | 10am | FREE  
*Township of Schaumburg*

Join us for our Monthly Coffee Chat – an informal and welcoming opportunity to learn more about the range of disability and senior services available in our community. You'll have the chance to:

- Connect with the Director, Assistant Director and Committee Members of Disability & Senior Services. Share your thoughts, ask questions and engage in meaningful conversation about existing services.
- Learn about disability and senior services. Discover new programs, resources, and supports.
- Offer suggestions. We value your input! Help shape future programs by providing feedback.

This monthly event is sponsored by the Township of Schaumburg's Disability and Senior Services Committee.

\*January Coffee Chat will be January 22.



Township of Schaumburg  
 1 Illinois Boulevard  
 Hoffman Estates, IL 60169  
 Phone: 847-285-4541  
 www.schaumburgtownship.org  
 @SchaumburgTownship  
 @SchaumburgTownship  
 @TOSDeafServices

PRSR STD  
 U.S. POSTAGE PAID  
 PERMIT NO. 154  
 SCHAUMBURG, IL

The 25<sup>th</sup> Annual Putnam County  
**SPELLING BEE**



**THE 25TH ANNUAL PUTNAM COUNTY SPELLING BEE**



Wednesday, March 12 | 10:30am | \$75  
 Registration Window: January 28-February 18  
 Copley Theatre

It's a battle of wits as contestants vie for the spelling bee championship of a lifetime in this musical comedy. Combine a coming of age tale with the epic struggles of six underdogs competing to shine in their own sport, and you have The 25th Annual Putnam County Spelling Bee, which sheds a humorous light on adolescents growing up under the pressure to excel. Cost includes show, lunch and transportation.

**TOWNSHIP ELECTED OFFICIALS**



SUPERVISOR  
 Timothy M.  
 Heneghan



TRUSTEE  
 Robert N. Fiorio



TRUSTEE  
 Demetrius J.  
 Gibson



TRUSTEE  
 Lauren Saternus



TRUSTEE  
 Matthew J.  
 Steward



CLERK  
 W. Robert  
 Vinnedge



ASSESSOR  
 John R. Lawson, CIAO



HIGHWAY  
 COMMISSIONER  
 Scott M. Kegarise